

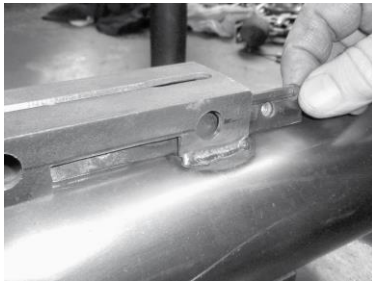


MOUNTING INSTRUCTIONS

VICTORY CROSS BIKE SADDLE BAG CENTER ATTACHMENT BRACKET

V-211SBB

Thank you for purchasing this RPW USA product. We believe that our products are the very best available and are engineered to provide a lifetime of use.



1. Mount RPW USA V-211 mufflers on bike
2. Mount Saddle bag guard rail on bike – place against V-211 bracket and mark area to be drilled out – make sure these are properly aligned
3. Remove Saddle bag guard rail and mufflers from bike – drill holes where marked (we suggest 3/8" holes)
4. Reattach RPW USA V-211 mufflers to bike
5. Slip flat bar with nuts in behind holes on bracket and property align nut holes with your drilled holes (make sure nuts on bar are on the

backside with tab extensions facing front and on top)

6. Mount saddle bag bars back on to the bike front and align with muffler bracket
7. Slip bevel washer with widest base on bottom onto front face of V-211 bracket (Make sure the widest section of this washer is at the bottom) and align all holes.
8. Attach with hardware, Add lock washer to bolt, then add flat washer to bolt, screw bolt through saddle bag bar through bevel washer and into nuts on flat bar.



- 2 – Flat bars with nuts**
- 4 – ¼" x 1 ½" Cap Screw**
- 4 – ¼" Lock Washer**
- 4 – ¼" Flat Washer**
- 4 – Bevel Washer**