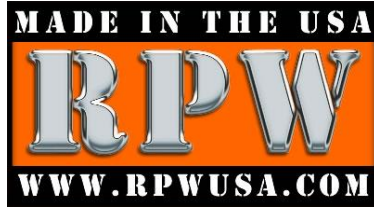


ALL INSTRUCTIONS CAN BE FOUND ON OUR WEBSITE UNDER " DEALER INFORMATION"



Building Pipes and Accessories for your Bikes

V-861
VICTORY SLASH PIPES FOR VEGAS & KINGPIN MODELS
2003-2005

Thank you for purchasing this RPW USA product. We believe that our products are the very best available and are engineered to provide a lifetime of use. These RPW Slash pipes can be installed on Victory Vegas/Kingpin models from 2003 to 2005 for a true custom touch. Basic hand tools and a service manual applicable to your model of motorcycle are all that is necessary to complete the installation.

BILL OF MATERIALS

Quantity	Description
1	Front pipe, chrome
1	Rear pipe, chrome
1	Front heat shield, chrome
1	Rear heat shield, chrome
1	Mounting bracket
2	Baffles
4	Exhaust clamp half (small)
4	Hose clamp, (small)
2	1/4" - 20 hex nut, stainless steel
2	1/4" washer, external star
2	5/16" - 18 x 1" button head cap screw, stainless steel
2	1/4" - 20 x 1/2" button head cap screw, stainless steel
2	5/16" lock washer
4	5/16" flat washer
2	5/16" - 18 hex nut, stainless

MAINTENANCE TIP: To keep your new RPW USA slash pipes looking their best, we recommend applying a high-quality chrome polish to them every time you detail your motorcycle.

Please Note: Pipes are not warranted against bluing and **UNDER NO CIRCUMSTANCE** will pipes be warranted after they have been run on an engine. See **TUNING TIP** in **Step 9**.

Thank you for purchasing this *RPW USA* product. We believe that our products are the very best available and are engineered to provide a lifetime of use. These pipes can be installed on all Victory Vegas/Kingpin 2003 to 2005 for a true custom touch. Basic hand tools and a service manual applicable to your model of motorcycle are all that is necessary to complete the installation.



V-861

VICTORY SLASH PIPES FOR VEGAS/KINGPIN 2003-2005 MODELS

STEP 1: Begin by removing the existing pipes from the motorcycle, then **Inspect the exhaust gaskets.** If they are worn or deteriorated, fit the engine with a new set. The front pipe must be carefully “snaked” in past the engine and foot controls as shown. Work the pipe in slowly and carefully to avoid scratching the chrome.

STEP 2: Installation of Slash pipes requires the lower frame rail to be cut off as shown. Deburr the frame rail with a file or burr knife to leave a smooth edge and cover any bare metal with touch-up paint to prevent rust. **NOTE:** The lower belt guard must be removed at this time as well. Failure to do so may result in belt damage or improper function of the



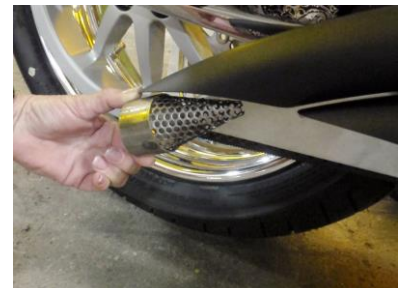
STEP 3: Following the procedure outlined in the appropriate service manual for your year and model of motorcycle. Mount frame bracket to rear foot peg hole.



STEP 4: To install the heat shields, slip the supplied hose clamps through the hoops welded onto the backside of each shield as shown. Install the heat shields onto the pipes and tighten all hose clamps evenly, aligning the shields with the exhaust pipes for proper fit.



STEP 5: The baffles can be installed prior to mounting the pipes to your motorcycle, or once the pipes are in place. Slip the baffles in with the pointed end in first and secure with hardware provided in this kit using an external star lock washers on each screw.

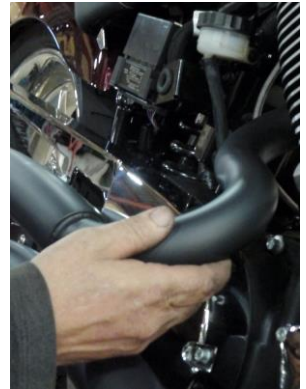




V-861

VICTORY SLASH PIPES FOR VEGAS/KINGPIN 2003-2005 MODELS

STEP 6: The front pipe must be carefully “snaked” in past the engine and foot controls as shown. Work the pipe in slowly and carefully to avoid scratching the chrome or finish.



STEP 7: Split exhaust clamps are included for both pipes. They are oriented as shown in the inset photo and can be installed on the engine one half at a time. As shown in the main photo this greatly helps the installation of the front pipe. Repeat this process for the rear pipe installation and snug all exhaust flange nuts, but do not tighten them completely.



STEP 8: Attach the pipes to the rear mounting bracket with the supplied hardware. Once the pipes are aligned correctly, tighten all hardware as specified by the specifications listed in the appropriate service manual for your year and model of motorcycle.



STEP 9: Prior to starting the engine, wipe the pipes down with lacquer thinner or acetone on a clean rag. Start your engine and check for exhaust leaks. You are now ready to enjoy your RPW USA Slash exhaust pipes. Installation of this exhaust will require the use of an Adjustable Fuel Tuner. See your Victory dealer for details.

TUNING TIP – To help prevent bluing, the engine should be properly tuned before running it with the new exhaust. We recommend an Adjustable Fuel Tuner.

WARNING: Never wash exhaust pipes when they are warm or hot.

OWNER & DEALER CARE INSTRUCTIONS: After Header Installation and Before Engine Run - Remove grease and/or skin oils from the tube surface. Stains & fingerprints will show when header gets hot.

CARE INSTRUCTIONS:

- Chrome: Wipe down tubes with rubbing alcohol and a soft cloth, dry thoroughly.
- Ceramic Coated / Polished Ceramic Coated Headers: Wipe the tubes down with a mild soap, warm water and a soft cloth, dry thoroughly.