



Building Pipes and Accessories for your Bikes

V-862

VICTORY SLASH PIPES FOR 2005 – PRESENT HAMMER & JACKPOT MODELS

V-872

VICTORY SLASH PIPES FOR 2006 – PRESENT VEGA/KINGPIN/HIGHBALL/JUDGE/BOARDWALK MODELS

ALL INSTRUCTIONS CAN BE FOUND ON OUR WEBSITE UNDER “DEALER INFORMATION”

Thank you for purchasing this RPW USA product. We believe that our products are the very best available and are engineered to provide a lifetime of use. These RPW Slash pipes can be installed on Victory Hammer & Jackpot models from 2005 to present and the Victory Vegas & Kingpin models from 2006 to present. Basic hand tools and a service manual applicable to your model of motorcycle are all that is necessary to complete the installation.

BILL OF MATERIALS

| Part # | Quantity | Description |
|--------|----------|---|
| N/A | 1 | Front pipe, chrome |
| N/A | 1 | Rear pipe, chrome |
| N/A | 1 | Front heat shield, chrome |
| N/A | 1 | Rear heat shield, chrome |
| N/A | 1 | Mounting bracket |
| N/A | 2 | Baffles |
| N/A | 4 | Exhaust clamp half |
| N/A | 5 | Hose clamp, stainless steel |
| N/A | 2 | 1/4" – 20 hex nut, stainless steel |
| N/A | 2 | 1/4" washer, external star |
| N/A | 2 | 5/16"–18 x 1" (V-862); 5/16"–18 x 1-1/2" (V-872)BH cap screw, stainless |
| N/A | 2 | 1/4" - 20 x 1/2" button head cap screw, stainless steel |
| N/A | 2 | 5/16" lock washer |
| N/A | 4 | 5/16" flat washer |
| N/A | 2 | 5/16" – 18 hex nut, stainless |
| N/A | 1 | 3/8" flat washer |
| N/A | 2 | 1/2" Aluminum Spacer - 3/8" Hole 08-Present (v-872) |

MAINTENANCE TIP: To keep your new RPW USA slash pipes looking their best, we recommend applying a high-quality chrome polish to them every time you detail your motorcycle.

Please Note: Pipes are not warranted against bluing and **UNDER NO CIRCUMSTANCE** will pipes be warranted after they have been run on an engine. See **TUNING TIP** in **Step 9**.



V-862
VICTORY SLASH PIPES FOR 2005 – PRESENT HAMMER & JACKPOT MODELS
V-872 VICTORY SLASH PIPES FOR 2006 – PRESENT
VEGAS/KINGPIN/HIGHBALL/JUDGE/BOARDWALK MODELS

STEP 1: Begin by removing the existing pipes from the motorcycle, and then **inspect the exhaust gaskets**. If they are worn or deteriorated, fit the engine with a new set.

STEP 2: Installation of Slash pipes requires the lower frame rail to be cut off as shown. De-burr the frame rail with a file or burr knife to leave a smooth edge and cover any bare metal with touch-up paint to prevent rust.



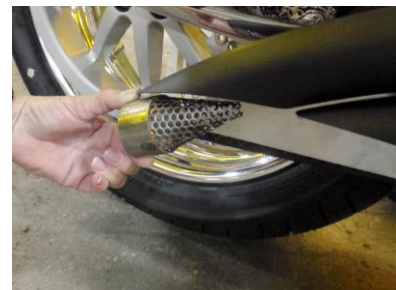
STEP 3: Following the procedure outlined in the appropriate service manual for your year and model of motorcycle, remove the swing arm pivot shaft nut. Place the rear mounting bracket over the pivot shaft making sure that the 3/8" washer (inset) is placed inside the bracket as shown, tighten the pivot shaft nut while orienting the mounting bracket facing the rear of the bike, parallel to the ground as shown.



STEP 4: To install the heat shields, slip the supplied hose clamps through the hoops welded onto the backside of each shield as shown. Install the heat shields onto the pipes and tighten all hose clamps evenly, aligning the shields with the exhaust pipes for proper fit.



STEP 5: The baffles can be installed prior to mounting the pipes to your motorcycle, or once the pipes are in place. Slip the baffles in with the pointed end in first and secure with hardware provided in this kit using two of the external star lock washers on each screw, one on the inside and one on the outside of the pipe.



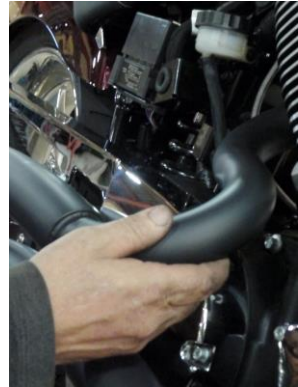
V-862

VICTORY SLASH PIPES FOR 2005 – PRESENT HAMMER & JACKPOT MODELS

V-872

VICTORY SLASH PIPES FOR 2006 – PRESENT VEGA/KINGPIN/HIGHBALL/JUDGE/BOARDWALK MODELS

STEP 6: The front pipe must be carefully “snaked” in past the engine and foot controls as shown. Work the pipe in slowly and carefully to avoid scratching the chrome or finish.



STEP 7: Split exhaust clamps are included for both pipes. They are oriented as shown in the inset photo and can be installed on the engine one half at a time. As shown in the main photo this greatly helps the installation of the front pipe. Repeat this process for the rear pipe installation and snug all exhaust flange nuts, but do not tighten them completely.



STEP 8: Attach the pipes to the rear mounting bracket with the supplied hardware. (**Note: 2008 and up Vegas models, using the supplied hardware slip aluminum spacers in place on rear mounting bracket and then attach the pipes to the rear mounting bracket.**) Once the pipes are aligned correctly, tighten all hardware as specified by the specifications listed in the appropriate service manual for your year and model of motorcycle.



STEP 9: Prior to starting the engine, wipe the pipes down with lacquer thinner or acetone on a clean rag. Start your engine and check for exhaust leaks. You are now ready to enjoy your RPW USA Slash exhaust pipes.

OWNER & DEALER CARE INSTRUCTIONS: After Header Installation and Before Engine Run - Remove grease and/or skin oils from the tube surface. Stains & fingerprints will show when header gets hot.

CARE INSTRUCTIONS:

- Chrome: Wipe down tubes with rubbing alcohol and a soft cloth, dry thoroughly.
- Ceramic Coated / Polished Ceramic Coated Headers: Wipe the tubes down with a mild soap, warm water and a soft cloth, dry thoroughly.
- **WARNING:** Never wash exhaust pipes when they are warm or hot.

TUNING TIP – To help prevent bluing, the engine should be properly tuned before running it with the new exhaust. We recommend an Adjustable Fuel Tuner